



**Alef Shin Group**

נכסים | תיווך, משכנתא, נכסים | [www.alefshin.com](http://www.alefshin.com)

REAL ESTATE, MORTGAGE, PROPERTIES IN ISRAEL





## LIMASSOL

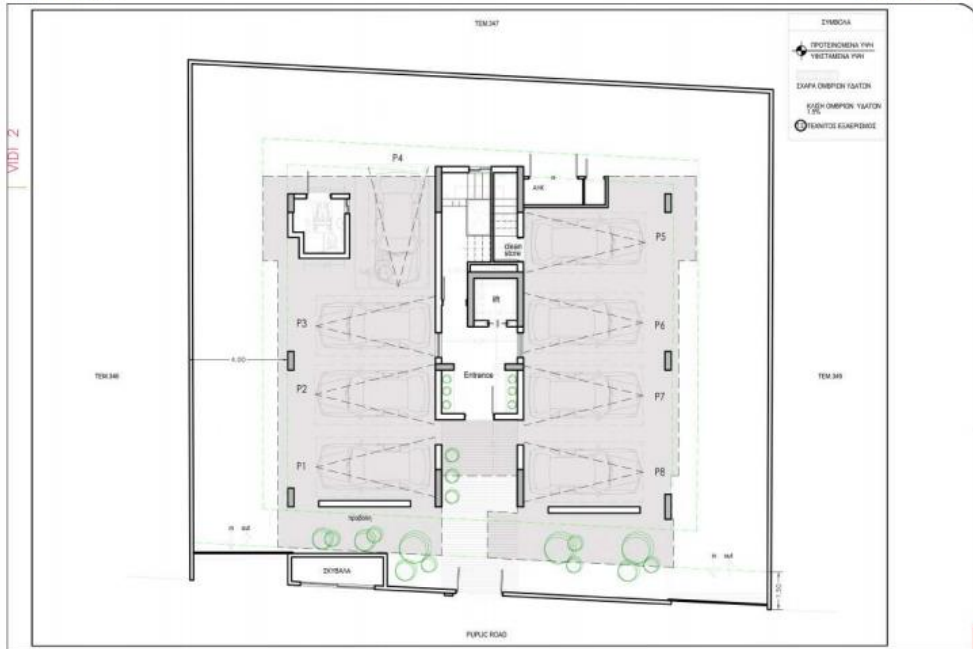
the luxury complex consist of six 2-bedroomed apartments and one luxury penthouse with private garden and jacuzzi on the roof. The project is located in one of Limassol's prestigious central districts- Neapolis, within around 400 metres of the sandy beach, close to Limassol Marina with its restaurants, SPA and boutiques.

The perfect size of the complex is ideal to provide a high level of privacy and security. The modern and elegant architecture, perfect planning solutions and expensive finishes will pleasantly surprise everybody. The central location of the project in the active part of Limassol will provide easy access to city amenities : supermarket, pharmacies, restaurants, schools and business centers.

- Only 7 appartments
- 400 meters to the beach
- Close to Limassol Marina with its restaurants, SPA and boutiques
- Amenities around the corner
- Top quality finishing and materials: exclusive laminate, marble , expensive windows
- Underfloor heating
- Provisions for VRV central air-conditioning
- High ceilings [3.10 meters net]
- Luxury kitchen cabinets, wardrobes and doors
- Large covered balconies
- Security entrance doors

Floor plans

Ground Floor



Floor plans

Floor 2



Floor plans

Floor 1



Floor plans

Floor 3







# Specification of construction and finishing



Luxurious marble floors and parquet



Thermo-bricks (28 cm)



Italian brands kitchen cabinets



Italian sanitary ware



Double glazed windows with aluminium frames



Safe fireproof doors



## Choice of properties

APT No	BEDROOMS	BATHROOMS	INTERNAL LIVING AREA M <sup>2</sup>	COVERED VERANDA AREA M <sup>2</sup>	STORE ROOM AREA M <sup>2</sup>	UN- COVERED VERANDA AREA/ ROOF GARDEN M <sup>2</sup>	COVERED COMMON AREA M <sup>2</sup>	TOTAL AREA M <sup>2</sup>
101	2	2	83	20.4	2.5	-	11	116.95
102	2	2	83	23.4	2.5	-	11	120.4
201	2	2	83	20.4	2.5	-	11	117.4
202	2	2	83	23.4	2.5	-	11	120.4
301	2	2	83	17	2.5	3.4	11	117.4
<del>302</del>	<del>2</del>	<del>2</del>	<del>83</del>	<del>20</del>	<del>2.5</del>	<del>3.4</del>	<del>11</del>	<del>120.4</del>
401	3	3	131.5	53	2.5	17.67 75	22	347,5

\* The areas stated above may slightly differ upon issuance of relevant authority permits





PRICE LIST DATE: 01.10.2020

STATUS: UNDER CONSTRUCTION

APT NO.	BEDROOMS	BATHROOMS	INTERNAL LIVING AREA M <sup>2</sup>	COVERED VERANDA AREA M <sup>2</sup>	STORE ROOM AREA M <sup>2</sup>	UN- COVERED VERANDA AREA/ ROOF GARDEN M <sup>2</sup>		COVERED COMMON AREA M <sup>2</sup>	TOTAL AREA M <sup>2</sup>	EURO PRICE €
101	2	2	83	20,4	2,55	-		11	116,95	€480 000
102	2	2	83	23,4	3	-		11	120,4	€480 000
201	2	2	83	20,4	3	-		11	117,4	€528 000
202	2	2	83	23,4	3	-		11	120,4	€534 000
301	2	2	83	17	3	3,4		11	117,4	€552 000
302	2	2	83	20	3	3,4		11	120,4	Sold
401	3	4	131,5	53	4	67	70	22	347,5	€1068 000

#### PRICE LIST

• VAT is applicable on the above mentioned prices.

• The developer reserves the right to change and/ or amend the above prices without prior notice.

#### The following items are included in the above prices

- Under floor Central Heating
- Provision for VRV Air Conditioning System
- Top Quality Designer Kitchens & Wardrobes
- Granite Worktops
- Marble Stairs
- Pressurized Water System
- Pipe in Pipe plumbing System
- Solar Panel for Water Heating

- Landscaped Gardens with automatic irrigation system
- Fly Screens on Patio Doors
- Security Door
- Audio Visual Entry System
- CCTV for common areas
- Decorative ceilings with hidden lighting.
- Thermal Insulation throughout (extruded polystyrene)
- Private Covered Parking & Storeroom for each Apartment



בניין בוטיק יוקרתי הממוקם בלב לימסול, במרחק של 400 מטרים בלבד מהים ובמרחק הליכה לתשתית העירונית, לבתי הספר ולמרינה של לימסול עם יאכטות ובוטיקים ומסעדות יקרים.

בפרויקט דירות מפוארות הממוקמות במתחם עיצוב עכשווי השוכן בלב אזור נאפוליס בלימסול.

מגדיר את הסטנדרט לחיי יוקרה עם חללי פנים מרשימים, מיקום הולם ועיצוב מרשים.



**Alef Shin Group**

www.alefshin.com | תיווך, משכנתא, נכסים

REAL ESTATE, MORTGAGE, PROPERTIES IN ISRAEL

**ליצירת קשר \*4912**